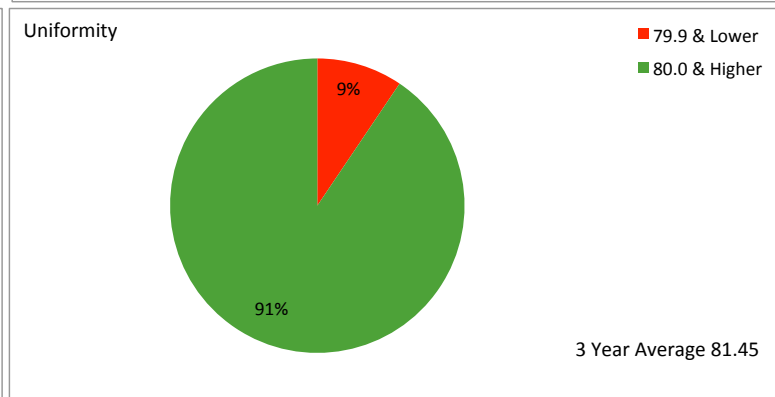
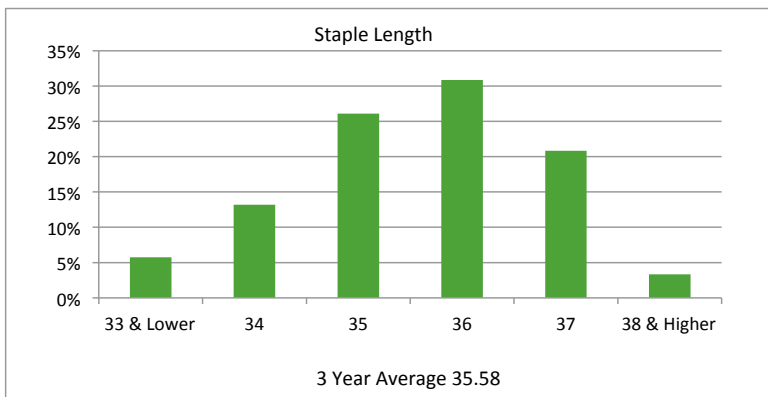
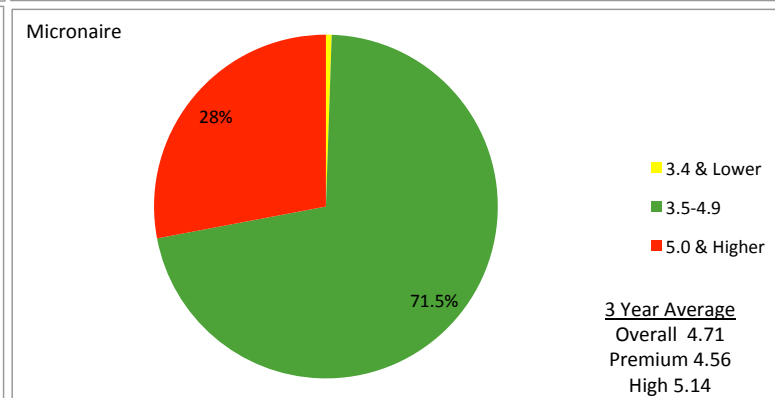
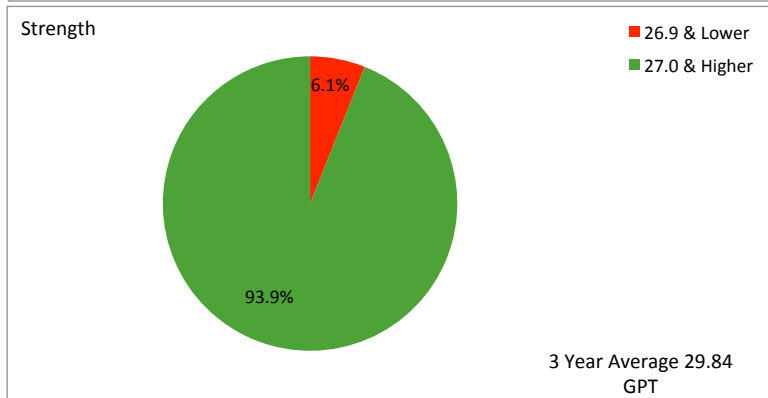
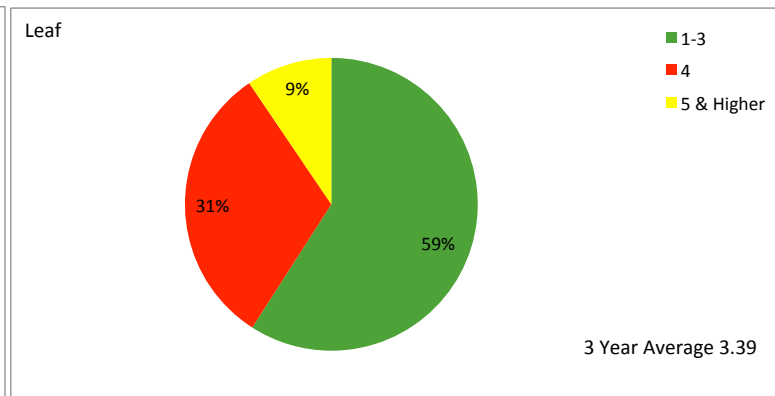
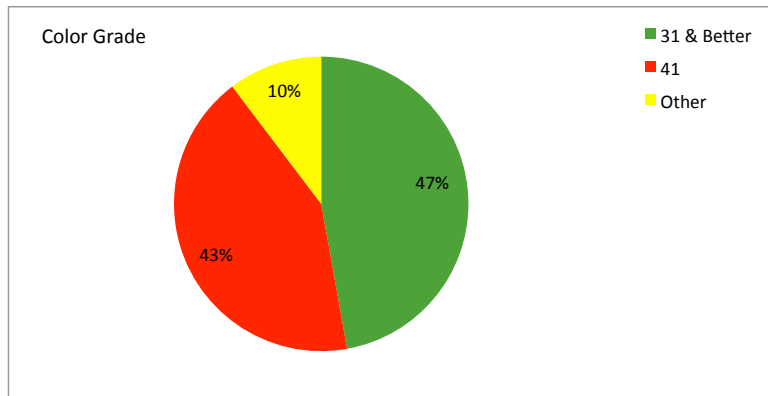


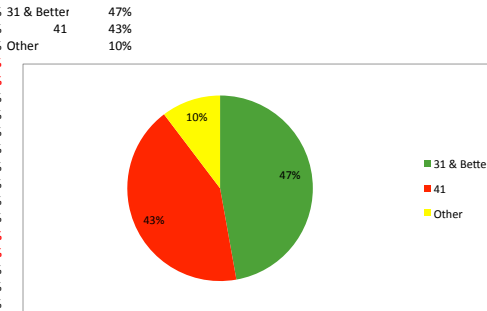
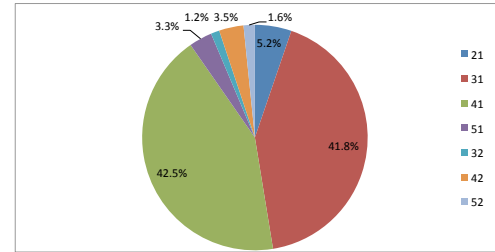
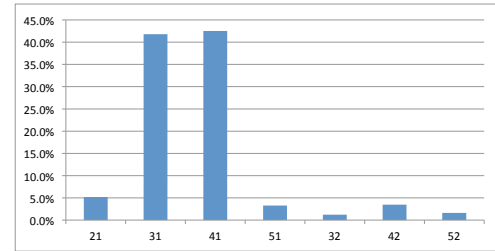
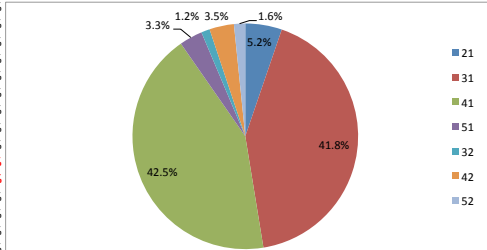
Average of Memphis/Eastern 2010-2012 Crop Qualities



Grade	2012 Crop	2011 Crop	2010 Crop	3 year
11	6,142	9,376	28,601	44,119
12	188	1,307	982	2,477
13	28	38	52	118
14	0	0	0	0
15	0	0	0	0
16	0	0	0	0
17	0	0	0	0
18	0	0	0	0
19	0	0	0	0
20	0	0	0	0
21	250,236	366,704	789,786	1,406,726
22	3,906	13,139	15,352	32,397
23	359	571	336	1,266
24	6	11	1	18
25	1	0	0	1
26	0	0	0	0
27	0	0	0	0
28	0	0	0	0
29	0	0	0	0
30	0	0	0	0
31	3,469,945	3,989,298	3,805,845	11,265,088
32	69,079	143,356	116,971	329,406
33	7,071	9,742	3,540	20,353
34	230	205	131	566
35	0	2	0	2
36	0	0	0	0
37	0	0	0	0
38	0	0	0	0
39	0	0	0	0
40	0	0	0	0
41	5,245,646	3,901,727	2,313,468	11,460,841
42	281,707	384,432	272,406	938,545
43	23,761	22,185	8,319	54,265
44	1,351	3,129	602	5,082
45	0	0	0	0
46	0	0	0	0
47	0	0	0	0
48	0	0	0	0
49	0	0	0	0
50	0	0	0	0
51	252,347	298,262	333,755	884,364
52	73,356	132,724	224,420	430,500
53	13,686	8,006	7,269	28,961
54	951	1,533	229	2,713
55	0	0	0	0
56	0	0	0	0
57	0	0	0	0
58	0	0	0	0
59	0	0	0	0
60	0	0	0	0
61	503	3,468	5,353	9,324
62	622	17,157	10,502	28,281
63	569	3,016	1,040	4,625
64	0	0	0	0
65	0	0	0	0
66	0	0	0	0
67	0	0	0	0
68	0	0	0	0
69	0	0	0	0
70	0	0	0	0
71	11	89	24	124
72	0	0	0	0
73	0	0	0	0
74	0	0	0	0
75	0	0	0	0
76	0	0	0	0
77	0	0	0	0
78	0	0	0	0
79	0	0	0	0
80	0	0	0	0
81	3	2	2	7
82	4	491	4	499
83	43	295	2	340
84	143	90	69	302
85	63	446	56	565
86	0	0	0	0

Grade	2012 Crop	2011 Crop	2010 Crop	3 year
11	0%	0%	0%	0.16% White
12	0%	0%	0%	0.01%
13	0%	0%	0%	0.00%
14	0%	0%	0%	0.00%
15	0%	0%	0%	0.00%
16	0%	0%	0%	0.00%
17	0%	0%	0%	0.00%
18	0%	0%	0%	0.00%
19	0%	0%	0%	0.00%
20	0%	0%	0%	0.00%
21	3%	4%	10%	5.22%
22	0%	0%	0%	0.12%
23	0%	0%	0%	0.00%
24	0%	0%	0%	0.00%
25	0%	0%	0%	0.00%
26	0%	0%	0%	0.00%
27	0%	0%	0%	0.00%
28	0%	0%	0%	0.00%
29	0%	0%	0%	0.00%
30	0%	0%	0%	0.00%
31	36%	43%	48%	41.80%
32	1%	2%	1%	1.22%
33	0%	0%	0%	0.08%
34	0%	0%	0%	0.00%
35	0%	0%	0%	0.00%
36	0%	0%	0%	0.00%
37	0%	0%	0%	0.00%
38	0%	0%	0%	0.00%
39	0%	0%	0%	0.00%
40	0%	0%	0%	0.00% Other
41	54%	42%	29%	42.52%
42	3%	4%	3%	3.48%
43	0%	0%	0%	0.20%
44	0%	0%	0%	0.02%
45	0%	0%	0%	0.00%
46	0%	0%	0%	0.00%
47	0%	0%	0%	0.00%
48	0%	0%	0%	0.00%
49	0%	0%	0%	0.00%
50	0%	0%	0%	0.00%
51	3%	3%	4%	3.28%
52	1%	1%	3%	1.60%
53	0%	0%	0%	0.11%
54	0%	0%	0%	0.01%
55	0%	0%	0%	0.00%
56	0%	0%	0%	0.00%
57	0%	0%	0%	0.00%
58	0%	0%	0%	0.00%
59	0%	0%	0%	0.00%
60	0%	0%	0%	0.00%
61	0%	0%	0%	0.03%
62	0%	0%	0%	0.10%
63	0%	0%	0%	0.02%
64	0%	0%	0%	0.00%
65	0%	0%	0%	0.00%
66	0%	0%	0%	0.00%
67	0%	0%	0%	0.00%
68	0%	0%	0%	0.00%
69	0%	0%	0%	0.00%
70	0%	0%	0%	0.00%
71	0%	0%	0%	0.00%
72	0%	0%	0%	0.00%
73	0%	0%	0%	0.00%
74	0%	0%	0%	0.00%
75	0%	0%	0%	0.00%
76	0%	0%	0%	0.00%
77	0%	0%	0%	0.00%
78	0%	0%	0%	0.00%
79	0%	0%	0%	0.00%
80	0%	0%	0%	0.00%
81	0%	0%	0%	0.00%
82	0%	0%	0%	0.00%
83	0%	0%	0%	0.00%
84	0%	0%	0%	0.00%
85	0%	0%	0%	0.00%
86	0%	0%	0%	0.00%

Grade	Light Spot	Spotted
21	5.2%	33
31	41.8%	43
41	42.5%	53
51	3.3%	
32	1.2%	
42	3.5%	
52	1.6%	
33	0.1%	
43	0.2%	
53	0.1%	



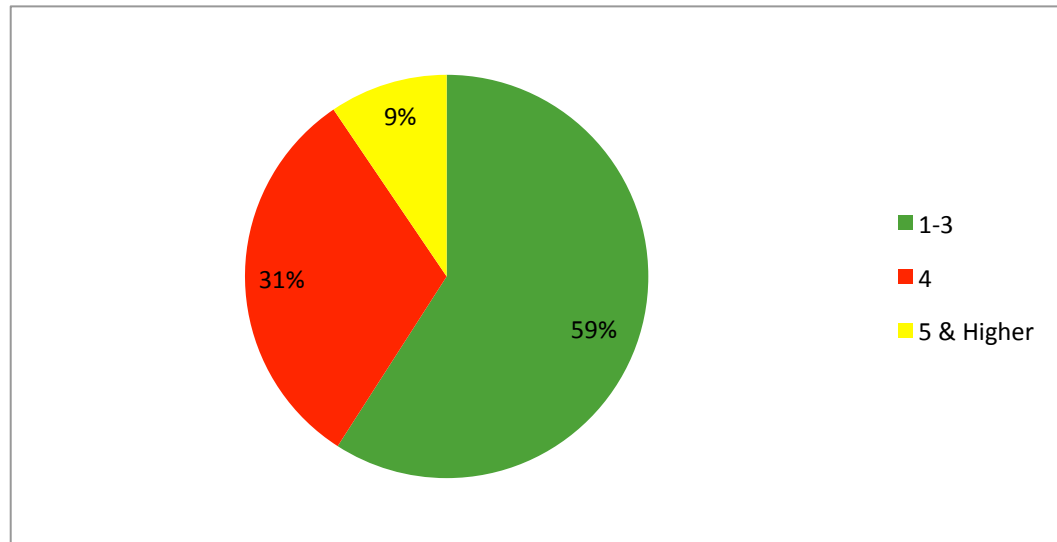
87	0	0	0	0	87	0%	0%	0%	0.00%
88	0	0	0	0	88	0%	0%	0%	0.00%
89	0	0	0	0	89	0%	0%	0%	0.00%
90	0	0	0	0	90	0%	0%	0%	0.00%
91	0	0	0	0	91	0%	0%	0%	0.00%
92	0	0	0	0	92	0%	0%	0%	0.00%
93	0	0	0	0	93	0%	0%	0%	0.00%
94	0	0	0	0	94	0%	0%	0%	0.00%
95	0	0	0	0	95	0%	0%	0%	0.00%
96	0	0	0	0	96	0%	0%	0%	0.00%
97	8	8	12	28	97	0%	0%	0%	0.00%
98	5	29	8	42	98	0%	0%	0%	0.00%
<hr/>					<hr/>				
	9,701,970	9,310,838	7,939,137	26,951,945		1.00	1.00	1.00	1.00

99.12%

Leaf	2012	2011	2010	3 year
1	40,753	47,705	44,779	133,237
2	1,122,874	1,137,638	900,357	3,160,869
3	4,112,837	4,361,798	4,156,484	12,631,119
4	3,257,077	2,926,576	2,287,865	8,471,518
5	968,514	722,821	469,034	2,160,369
6	167,028	98,210	68,380	333,618
7	27,103	13,471	10,275	50,849
8	5,784	2,619	1,963	10,366
	9,701,970	9,310,838	7,939,137	26,951,945
	3.4770311	3.3759897	3.3138972	3.39407149
				3.3940715

1-3            59%  
4                31%  
5 & Higher    9%

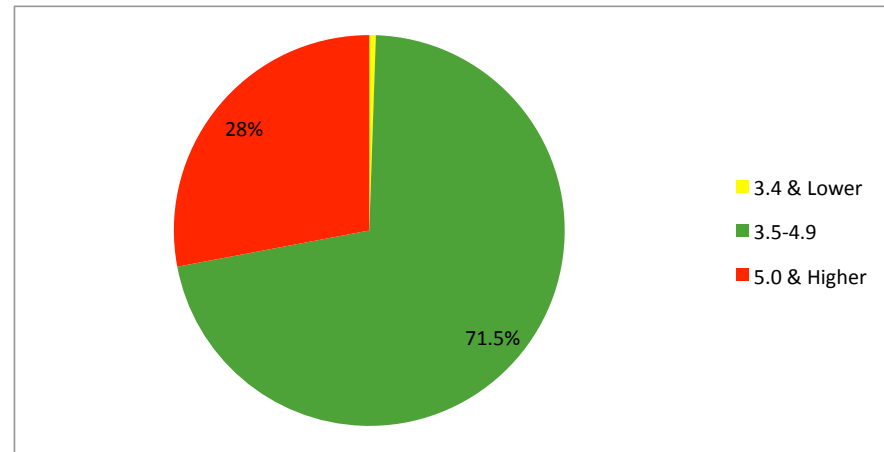
Leaf	2012 Crop	2011 Crop	2010 Crop	3 year
1	0%	1%	1%	0%
2	12%	12%	11%	12%
3	42%	47%	52%	47%
4	34%	31%	29%	31%
5	10%	8%	6%	8%
6	2%	1%	1%	1%
7	0%	0%	0%	0%
8	0%	0%	0%	0%
	100%	100%	100%	100%



Mic	2012	2011	2010
2.3	19	2.1 9	2.1 2
2.4	38	2.2 64	2.2 14
2.5	177	2.3 145	2.3 40
2.6	308	2.4 448	2.4 130
2.7	584	2.5 795	2.5 249
2.8	854	2.6 1226	2.6 421
2.9	1386	2.7 1874	2.7 714
3	2214	2.8 2827	2.8 976
3.1	3579	2.9 4363	2.9 1268
3.2	4715	3 7066	3 1713
3.3	7062	3.1 9648	3.1 2116
3.4	11890	3.2 14647	3.2 2972
3.5	18904	3.3 19358	3.3 3751
3.6	28101	3.4 29250	3.4 6182
3.7	41312	3.5 44923	3.5 9143
3.8	60984	3.6 63249	3.6 13115
3.9	92560	3.7 90829	3.7 19847
4	138661	3.8 126862	3.8 29357
4.1	211974	3.9 167953	3.9 45437
4.2	313235	4 223638	4 70192
4.3	455567	4.1 300035	4.1 109078
4.4	634992	4.2 399511	4.2 167035
4.5	823439	4.3 525629	4.3 250981
4.6	995220	4.4 673463	4.4 361639
4.7	1086133	4.5 829199	4.5 506833
4.8	1089933	4.6 963853	4.6 668527
4.9	1014628	4.7 1017131	4.7 824592
5	877355	4.8 983928	4.8 931201
5.1	699992	4.9 862321	4.9 983516
5.2	501111	5 699185	5 950401
5.3	320838	5.1 525343	5.1 804024
5.4	172789	5.2 358543	5.2 576669
5.5	72664	5.3 208526	5.3 344182
5.6	16606	5.4 104261	5.4 172362
5.7	1992	5.5 38405	5.5 61361
5.8	154	5.6 10104	5.6 15870
	9701970	5.7 1923	5.7 2749
45803628	4.7210647	5.8 286	5.8 422
	7005643	5.9 9	5.9 49
31996801	4.5672896	6 3	6 6
		6.1 2	6.1 0
		6.2 2	6.2 1

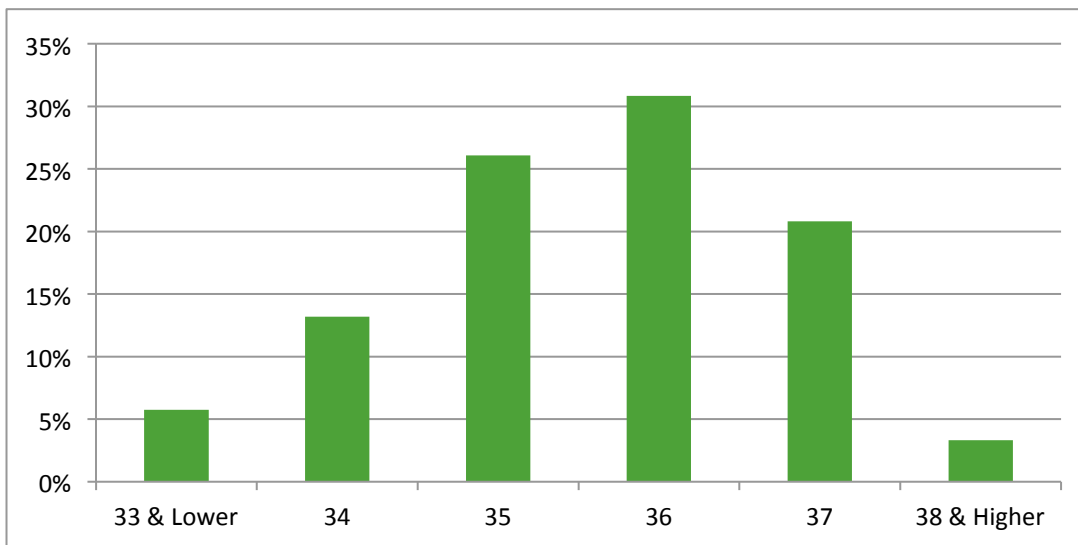
3.4 & lower	145094
3.5-3.7	329423
3.8-4.9	18939237
5.0 & Higher	7538191
	26951945

3.4 & Lower	0.5%	3.4 & Lowe	0.5%
3.5-3.7	1.2%	3.5-4.9	71.5%
3.8-4.9	70%	5.0 & Highe	28%
5.0 & Higher	28%		



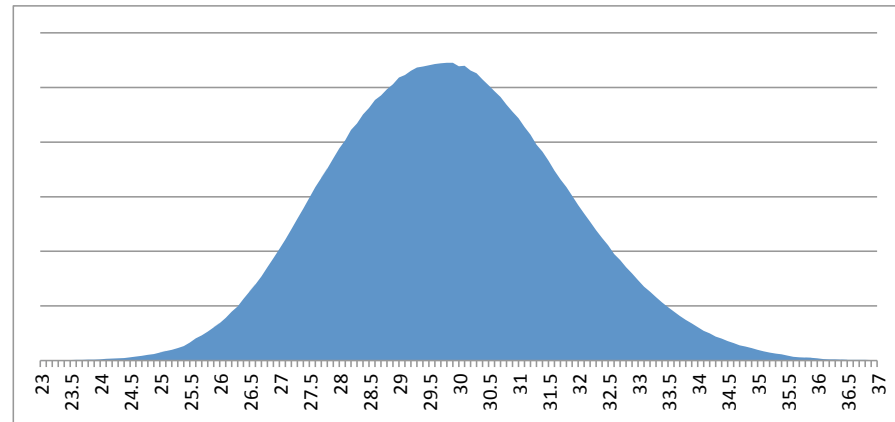
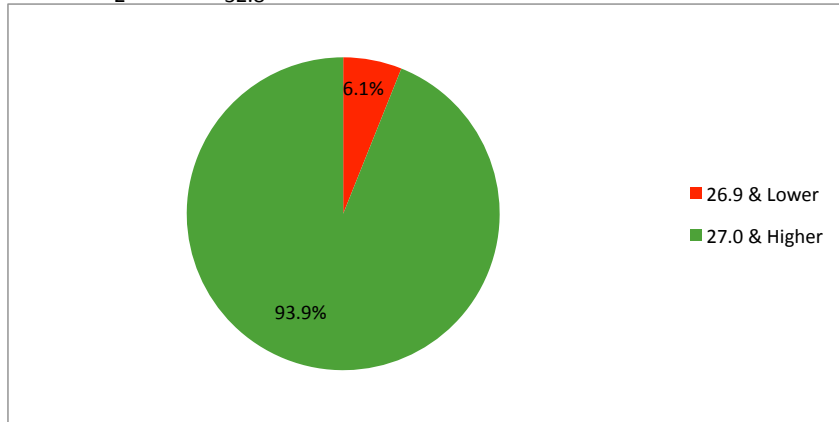
2663501	6.3	0	7939137	
13700907	5.1439465	6.4	1 38177953.6	4.8088292
		6.5	0	
		6.6	1	
			4990493	4.7136349 Overall Mic Average
			9310838	23061922.3 4.6211712
43060046.2	4.624723			
			2928096	4.5585295 Premium Mic Average
			7272524	15050931.3 5.1401769
32778032.4	4.5071054			
				5.1391868 High All Mic Average
			1946594	
9988333.6	5.1311848			

	2012	2011	2010				
33 & Lower	145,910	458,109	946,058	1,550,077	33 & Lower	6%	33 1.8979165
34	671,032	1,190,876	1,694,675	3,556,583	34	13%	34 4.4866455
35	2,265,981	2,352,022	2,409,325	7,027,328	35	26%	35 9.1257414
36	3,695,837	2,696,050	1,920,860	8,312,747	36	31%	36 11.103425
37	2,562,969	2,157,305	889,481	5,609,755	37	21%	37 7.7011487
38 & Higher	360,241	456,476	78,738	895,455	38 & Higher	3%	38 1.262517
	9,701,970	9,310,838	7,939,137	26,951,945		100%	35.577394



Strength	2102	2011	2010	3 year
16	1	2		3
16.1	1	0		1
16.2	2	4		6
16.3	0	0		0
16.4	2	0		2
16.5	1	0		
16.6	1	0		
16.7	0	1		
16.8	0	0		
16.9	2	1		
17	0	0		
17.1	0	0		
17.2	0	0		
17.3	1	0		
17.4	2	0		
17.5	0	0		
17.6	0	0		
17.7	1	0		
17.8	0	0		
17.9	0	0		0
18	0	1	2	3
18.1	1	1	1	3
18.2	0	0	0	0
18.3	1	0	0	1
18.4	0	0	0	0
18.5	0	0	0	0
18.6	0	0	1	1
18.7	0	0	0	0
18.8	1	0	0	1
18.9	0	0	0	0
19	0	0	0	0
19.1	0	0	0	0
19.2	0	0	1	1
19.3	1	0	1	2
19.4	0	0	0	0
19.5	1	0	0	1
19.6	0	1	1	2
19.7	0	0	0	0
19.8	0	0	1	1
19.9	0	0	1	1
20	1	2	3	6
20.1	0	1	1	2
20.2	0	0	2	2
20.3	1	2	0	3

Strength	2102	2011	2010	3 year
48	16			
16.1				
97.2	26.9 & Lower	1,634,751.00		
0	27.0 & Higher	25,317,194.00		
32.8				





20.4	1	1	1	3	61.2		
20.5	0	1	4	5	102.5		
20.6	0	2	1	3	61.8		
20.7	0	1	4	5	103.5		
20.8	0	0	6	6	124.8		
20.9	0	1	2	3	62.7		
21	1	1	6	8	168		
21.1	0	2	20	22	464.2		
21.2	2	3	10	15	318		
21.3	1	0	7	8	170.4		
21.4	0	1	8	9	192.6		
21.5	0	0	14	14	301		
21.6	0	1	14	15	324		
21.7	1	4	20	25	542.5		
21.8	0	1	28	29	632.2		
21.9	0	2	25	27	591.3		
22	4	6	33	43	946		
22.1	1	15	46	62	1370.2		
22.2	1	16	51	68	1509.6		
22.3	2	11	77	90	2007		
22.4	5	17	69	91	2038.4		
22.5	1	16	94	111	2497.5		
22.6	10	14	113	137	3096.2		
22.7	24	27	102	153	3473.1		
22.8	14	27	131	172	3921.6		
22.9	31	17	198	246	5633.4		
23	61	64	223	348	8004	23	0.001%
23.1	66	51	273	390	9009	23.1	0.001%
23.2	63	49	338	450	10440	23.2	0.002%
23.3	94	53	327	474	11044.2	23.3	0.002%
23.4	84	83	426	593	13876.2	23.4	0.002%
23.5	222	205	476	903	21220.5	23.5	0.003%
23.6	357	269	586	1,212	28603.2	23.6	0.004%
23.7	451	312	670	1,433	33962.1	23.7	0.005%
23.8	584	388	725	1,697	40388.6	23.8	0.006%
23.9	695	401	846	1,942	46413.8	23.9	0.007%
24	898	514	1,075	2,487	59688	24	0.009%
24.1	1,094	706	1,240	3,040	73264	24.1	0.011%
24.2	1,263	798	1,425	3,486	84361.2	24.2	0.013%
24.3	1,389	864	1,648	3,901	94794.3	24.3	0.014%
24.4	1,715	1,103	1,794	4,612	112532.8	24.4	0.017%
24.5	2,423	1,231	2,313	5,967	146191.5	24.5	0.022%
24.6	3,173	1,330	2,948	7,451	183294.6	24.6	0.028%
24.7	3,790	1,625	3,346	8,761	216396.7	24.7	0.033%
24.8	4,593	1,855	3,943	10,391	257696.8	24.8	0.039%

24.9	5,220	2,072	4,427	11,719	291803.1	24.9	0.043%
25	6,429	3,161	4,967	14,557	363925	25	0.054%
25.1	7,468	3,997	5,724	17,189	431443.9	25.1	0.064%
25.2	9,016	4,359	6,482	19,857	500396.4	25.2	0.074%
25.3	10,336	5,301	7,349	22,986	581545.8	25.3	0.085%
25.4	12,235	5,795	8,296	26,326	668680.4	25.4	0.098%
25.5	15,377	7,957	9,457	32,791	836170.5	25.5	0.122%
25.6	19,075	10,713	10,833	40,621	1039897.6	25.6	0.151%
25.7	21,689	12,340	12,328	46,357	1191374.9	25.7	0.172%
25.8	25,207	14,036	13,963	53,206	1372714.8	25.8	0.197%
25.9	29,175	16,267	15,463	60,905	1577439.5	25.9	0.226%
26	32,903	18,332	17,551	68,786	1788436	26	0.255%
26.1	37,221	21,053	20,115	78,389	2045952.9	26.1	0.291%
26.2	42,843	23,830	22,713	89,386	2341913.2	26.2	0.332%
26.3	47,039	26,741	25,543	99,323	2612194.9	26.3	0.369%
26.4	53,316	30,574	28,914	112,804	2978025.6	26.4	0.419%
26.5	60,243	34,615	31,435	126,293	3346764.5	26.5	0.469%
26.6	65,998	38,623	34,951	139,572	3712615.2	26.6	0.518%
26.7	71,865	43,466	38,811	154,142	4115591.4	26.7	0.572%
26.8	79,448	48,267	43,430	171,145	4586686	26.8	0.635%
26.9	85,911	53,494	48,032	187,437	5042055.3	26.9	0.696%
27	94,025	57,851	52,463	204,339	5517153	27	0.758%
27.1	100,424	64,259	56,818	221,501	6002677.1	27.1	0.822%
27.2	107,584	69,795	63,169	240,548	6542905.6	27.2	0.893%
27.3	114,326	76,638	68,738	259,702	7089864.6	27.3	0.964%
27.4	120,183	83,464	74,852	278,499	7630872.6	27.4	1.034%
27.5	126,448	90,903	80,824	298,175	8199812.5	27.5	1.107%
27.6	133,111	96,933	87,478	317,522	8763607.2	27.6	1.178%
27.7	136,933	104,846	92,986	334,765	9272990.5	27.7	1.242%
27.8	141,027	110,464	100,147	351,638	9775536.4	27.8	1.305%
27.9	144,079	118,082	108,076	370,237	10329612.3	27.9	1.374%
28	148,507	125,592	114,296	388,395	10875060	28	1.441%
28.1	150,214	131,251	122,132	403,597	11341075.7	28.1	1.498%
28.2	153,291	138,203	130,661	422,155	11904771	28.2	1.567%
28.3	155,818	142,468	135,730	434,016	12282652.8	28.3	1.611%
28.4	157,529	149,410	143,739	450,678	12799255.2	28.4	1.673%
28.5	159,863	154,997	147,868	462,728	13187748	28.5	1.717%
28.6	164,200	159,561	153,645	477,406	13653811.6	28.6	1.772%
28.7	162,212	164,620	158,437	485,269	13927220.3	28.7	1.801%
28.8	164,584	166,413	165,767	496,764	14306803.2	28.8	1.844%
28.9	167,626	170,227	168,116	505,969	14622504.1	28.9	1.878%
29	169,988	175,591	172,632	518,211	15028119	29	1.923%
29.1	171,958	175,951	175,026	522,935	15217408.5	29.1	1.941%
29.2	174,324	178,021	178,266	530,611	15493841.2	29.2	1.969%
29.3	175,976	179,918	180,508	536,402	15716578.6	29.3	1.991%

29.4	177,003	180,279	181,137	538,419	15829518.6	29.4	1.998%
29.5	178,669	182,163	179,805	540,637	15948791.5	29.5	2.006%
29.6	179,029	182,147	181,699	542,875	16069100	29.6	2.015%
29.7	179,650	183,494	181,037	544,181	16162175.7	29.7	2.020%
29.8	181,351	184,868	179,081	545,300	16249940	29.8	2.024%
29.9	182,485	184,719	178,158	545,362	16306323.8	29.9	2.024%
30	181,164	183,153	174,601	538,918	16167540	30	2.000%
30.1	183,394	183,360	172,861	539,615	16242411.5	30.1	2.003%
30.2	179,976	181,728	169,583	531,287	16044867.4	30.2	1.972%
30.3	179,282	180,920	166,074	526,276	15946162.8	30.3	1.953%
30.4	176,098	178,450	160,235	514,783	15649403.2	30.4	1.911%
30.5	173,538	175,939	154,541	504,018	15372549	30.5	1.871%
30.6	170,522	172,857	150,045	493,424	15098774.4	30.6	1.831%
30.7	167,151	169,729	145,687	482,567	14814806.9	30.7	1.791%
30.8	164,242	165,385	138,970	468,597	14432787.6	30.8	1.739%
30.9	157,809	163,310	134,734	455,853	14085857.7	30.9	1.692%
31	155,697	159,612	128,489	443,798	13757738	31	1.647%
31.1	150,024	154,359	123,514	427,897	13307596.7	31.1	1.588%
31.2	147,890	148,076	117,506	413,472	12900326.4	31.2	1.535%
31.3	139,863	143,666	111,905	395,434	12377084.2	31.3	1.468%
31.4	137,435	139,861	105,408	382,704	12016905.6	31.4	1.420%
31.5	130,804	134,211	100,914	365,929	11526763.5	31.5	1.358%
31.6	124,868	126,671	96,323	347,862	10992439.2	31.6	1.291%
31.7	120,740	120,689	90,589	332,018	10524970.6	31.7	1.232%
31.8	115,458	116,818	85,594	317,870	10108266	31.8	1.180%
31.9	109,286	112,286	79,898	301,470	9616893	31.9	1.119%
32	104,736	105,185	74,843	284,764	9112448	32	1.057%
32.1	98,022	100,920	70,422	269,364	8646584.4	32.1	1.000%
32.2	93,171	95,733	65,019	253,923	8176320.6	32.2	0.942%
32.3	87,806	89,743	61,149	238,698	7709945.4	32.3	0.886%
32.4	82,422	86,077	56,149	224,648	7278595.2	32.4	0.834%
32.5	77,553	80,578	53,145	211,276	6866470	32.5	0.784%
32.6	71,588	75,593	47,911	195,092	6359999.2	32.6	0.724%
32.7	67,283	72,376	44,377	184,036	6017977.2	32.7	0.683%
32.8	61,391	68,549	40,891	170,831	5603256.8	32.8	0.634%
32.9	56,219	65,397	37,876	159,492	5247286.8	32.9	0.592%
33	51,791	60,411	34,995	147,197	4857501	33	0.546%
33.1	47,867	55,929	31,627	135,423	4482501.3	33.1	0.503%
33.2	43,809	52,860	29,460	126,129	4187482.8	33.2	0.468%
33.3	39,458	49,744	26,878	116,080	3865464	33.3	0.431%
33.4	35,243	46,531	24,687	106,461	3555797.4	33.4	0.395%
33.5	32,728	43,286	21,852	97,866	3278511	33.5	0.363%
33.6	30,004	40,354	19,194	89,552	3008947.2	33.6	0.332%
33.7	25,973	38,189	17,469	81,631	2750964.7	33.7	0.303%
33.8	23,824	35,317	15,498	74,639	2522798.2	33.8	0.277%

33.9	21,408	32,733	14,204	68,345	2316895.5	33.9	0.254%
34	18,799	29,835	12,469	61,103	2077502	34	0.227%
34.1	16,155	27,538	10,736	54,429	1856028.9	34.1	0.202%
34.2	14,569	25,720	9,693	49,982	1709384.4	34.2	0.185%
34.3	12,528	23,004	8,427	43,959	1507793.7	34.3	0.163%
34.4	11,354	21,326	7,748	40,428	1390723.2	34.4	0.150%
34.5	9,827	19,434	6,519	35,780	1234410	34.5	0.133%
34.6	9,115	17,303	5,546	31,964	1105954.4	34.6	0.119%
34.7	7,623	15,388	4,948	27,959	970177.3	34.7	0.104%
34.8	6,921	14,308	4,366	25,595	890706	34.8	0.095%
34.9	6,246	12,738	4,009	22,993	802455.7	34.9	0.085%
35	5,329	10,887	3,497	19,713	689955	35	0.073%
35.1	4,847	9,172	2,797	16,816	590241.6	35.1	0.062%
35.2	4,026	8,124	2,489	14,639	515292.8	35.2	0.054%
35.3	3,553	7,143	2,259	12,955	457311.5	35.3	0.048%
35.4	3,313	6,306	1,985	11,604	410781.6	35.4	0.043%
35.5	2,557	5,025	1,512	9,094	322837	35.5	0.034%
35.6	1,982	4,076	957	7,015	249734	35.6	0.026%
35.7	1,676	3,631	838	6,145	219376.5	35.7	0.023%
35.8	1,452	3,365	807	5,624	201339.2	35.8	0.021%
35.9	1,309	2,891	757	4,957	177956.3	35.9	0.018%
36	1,052	2,379	497	3,928	141408	36	0.015%
36.1	829	1,729	254	2,812	101513.2	36.1	0.010%
36.2	683	1,566	264	2,513	90970.6	36.2	0.009%
36.3	670	1,381	204	2,255	81856.5	36.3	0.008%
36.4	561	1,201	210	1,972	71780.8	36.4	0.007%
36.5	461	979	148	1,588	57962	36.5	0.006%
36.6	444	917	28	1,389	50837.4	36.6	0.005%
36.7	409	890	34	1,333	48921.1	36.7	0.005%
36.8	370	785	34	1,189	43755.2	36.8	0.004%
36.9	347	653	32	1,032	38080.8	36.9	0.004%
37	211	439	37	687	25419	37	0.003%
37.1	129	346	17	492	18253.2	26,944,856	
37.2	147	301	12	460	17112		
37.3	97	292	11	400	14920		
37.4	124	260	14	398	14885.2		
37.5	88	311	18	417	15637.5		
37.6	103	305	10	418	15716.8		
37.7	70	225	8	303	11423.1		
37.8	79	218	3	300	11340		
37.9	76	173	9	258	9778.2		
38	50	152	5	207	7866		
38.1	43	160	4	207	7886.7		
38.2	33	112	0	145	5539		
38.3	67	112	1	180	6894		

38.4	68	113	2	183	7027.2
38.5	23	126	0	149	5736.5
38.6	56	104	4	164	6330.4
38.7	38	84	2	124	4798.8
38.8	18	63	2	83	3220.4
38.9	24	72	1	97	3773.3
39	44	56		100	3900
39.1	30	28		58	2267.8
39.2	33	27		60	2352
39.3	10	23		33	1296.9
39.4	10	33		43	1694.2
39.5	24	29		53	2093.5
39.6	37	34		71	2811.6
39.7	34	22		56	2223.2
39.8	8	20		28	1114.4
39.9	9	20		29	1157.1
40	22	10		32	1280
40.1	4	7		11	441.1
40.2	5	16		21	844.2
40.3	3	6		9	362.7
40.4	4	5		9	363.6
40.5	3	5		8	324
40.6	6	3		9	365.4
40.7	5	2		7	284.9
40.8	4	5		9	367.2
40.9	6	7		13	531.7
41	4	3		7	287
41.1	7	0		7	287.7
41.2	2	0		2	82.4
41.3	0	3		3	123.9
41.4	0	1		1	41.4
41.5	2	1		3	124.5
<hr/>					
	9,701,970	9,310,838	7,939,137	26,951,945	804,133,716
					29.83583246

	2012	2011	2010		
79.9 & Lower	662,483	730,905	1,151,408	2,544,796	79.9 & Lower 9%
80.0 & Higher	9,039,487	8,579,933	6,787,729	24,407,149	80.0 & Higher 91%
	9,701,970	9,310,838	7,939,137	26,951,945	
	9701970	9310838	7939137	26951945	
	81.56	81.54	81.22		
			81.4529382		

